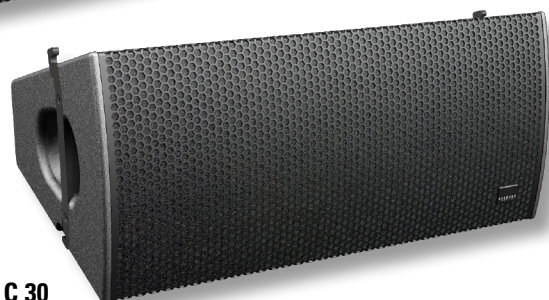


# Constant Curvature Array Units **C 15 / C 30**



**C 15**

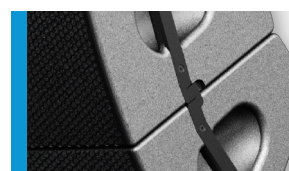


**C 30**

Das C 15 und C 30 System vereint als "Constant Curvature Array" die Vorzüge von Punktquellenlautsprechern mit der Performance von Line Arrays. Die vertikale Abstrahlung wird durch die Addition der einzelnen C-Serie Komponenten definiert. Mit dem C 15 und C 30 System stehen Winkel von 15° bzw. 30° zur Verfügung. Damit lassen sich mit relativ wenigen Elementen auch größere Hörerflächen sehr präzise und gleichmäßig beschallen. Die Anwendungen liegen im Bereich Theater, Stadien, Clubbeschallung und mittlerer Open Air Konzerte.

## PRODUCT SPECIFICATIONS

	<b>C 15</b>	<b>C 30</b>
<b>Speaker Components</b>	2 x 10" Nd (3" VC) 3 x 1" Nd (1,7" VC)	2 x 10" Nd (3" VC) 3 x 1" Nd (1,7" VC)
<b>Description</b>	Constant Curvature Array Units	
<b>Power</b> <small>AES / Peak</small>	800 W / 2400 W	800 W / 2400 W
<b>Impedance</b> <small>nominal</small>	8 Ω	8 Ω
<b>SPL</b> <small>1 W / Peak @ 1m</small>	100 dB / 134 dB	100 dB / 134 dB
<b>Usable Range</b> <small>-6 dB</small>	70 Hz - 20 kHz	70 Hz - 20 kHz
<b>Tuning Frequency</b> <small>excursion minimum</small>	80 Hz	80 Hz
<b>X-Overpoint</b> <small>acoustical</small>	800 Hz	800 Hz
<b>Coverage</b> <small>horizontal x vertical</small>	90° x 15°	90° x 30°
<b>Max. Splay Angle</b>	15°	30°
<b>Connectors</b>	2 x Speakon NL4MP in/out, Coding: 1+/- HiMid, 2+/- loop thru	2 x Speakon NL4MP in/out, Coding: 1+/- HiMid, 2+/- loop thru
<b>Handles</b>	2 x	2 x
<b>Rigging / Fittings</b>	Integrated flying hardware, 8 x M10 for MultiRigg™/MultiTilt™	Integrated flying hardware, 8 x M10 for MultiRigg™/MultiTilt™
<b>Weight</b>	25 kg	23,5 kg
<b>Size</b> <small>height x width x depth</small>	32,0 x 70,0 x 38,0 cm	32,0 x 70,0 x 38,2 cm
<b>Order No.</b>	<b>00470</b>	<b>00472</b>



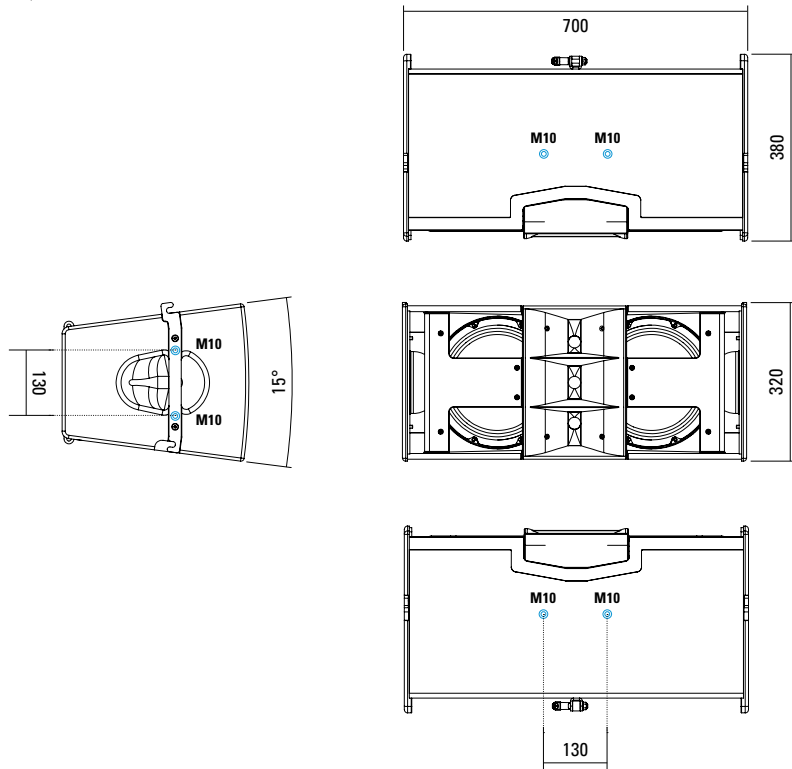
Integrierte Flugmechanik



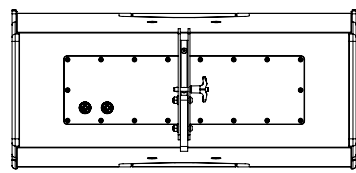
MultiRigg™ Hardware

## DIMENSIONS

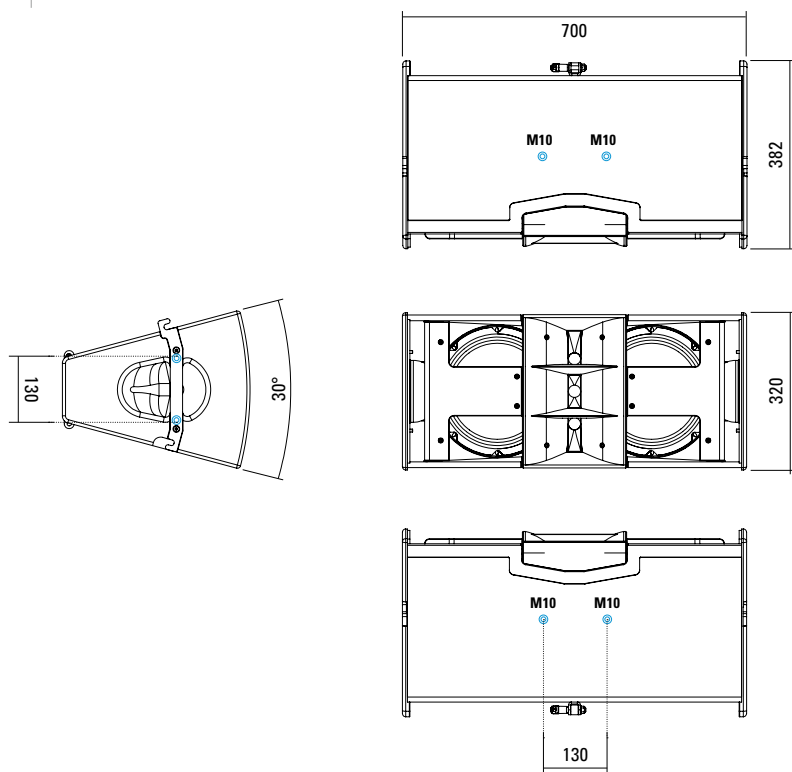
### C 15



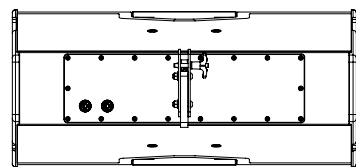
8 x M10 Twinpoints für MultiRigg™ / MultiTilt™



### C 30

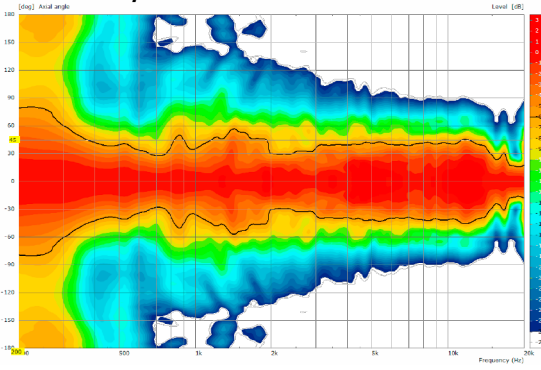


8 x M10 Twinpoints für MultiRigg™ / MultiTilt™

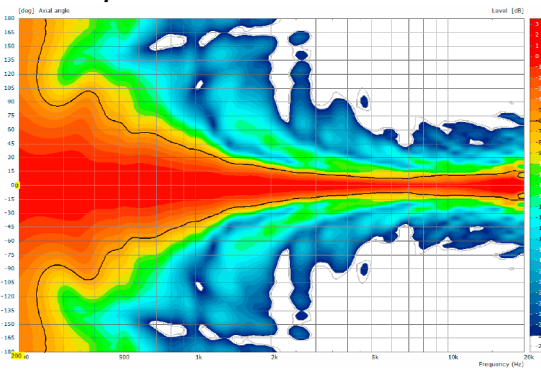


C 15

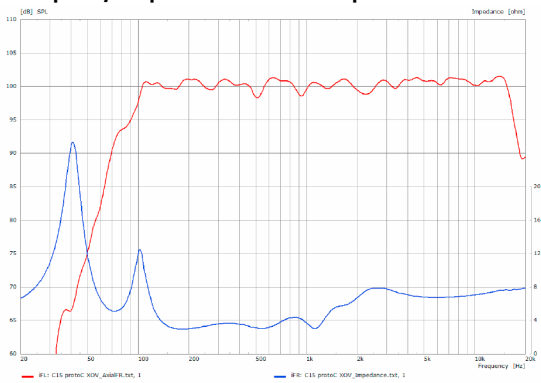
2D Directivity Plot - horizontal



Directivity Plot - vertical

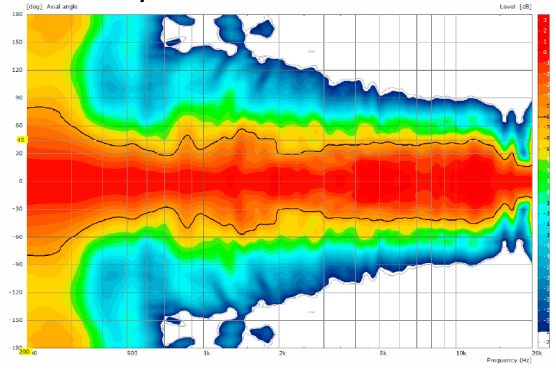


Frequency Response with Preset + Impedanz

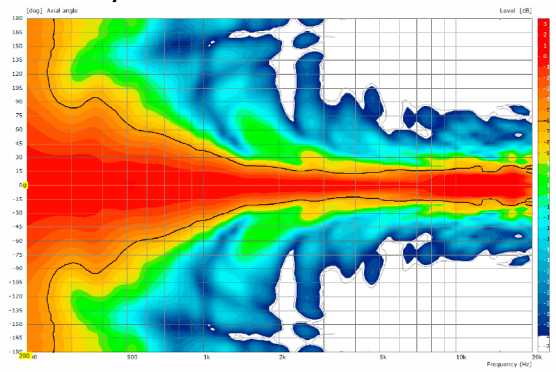


C 30

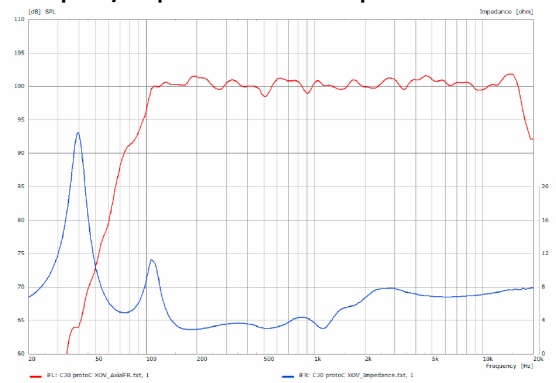
2D Directivity Plot - horizontal

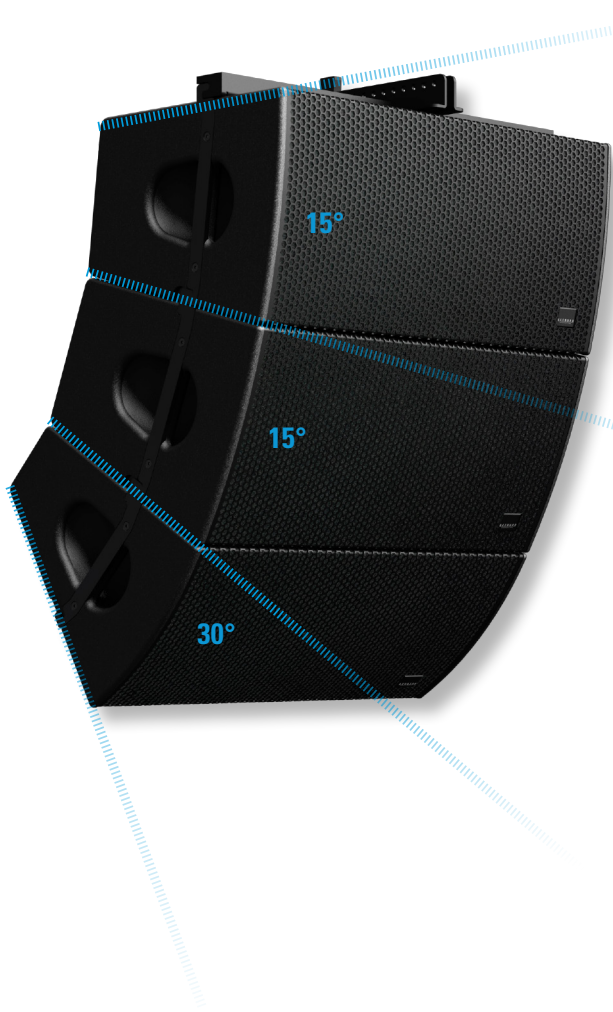


Directivity Plot - vertical



Frequency Response with Preset + Impedanz

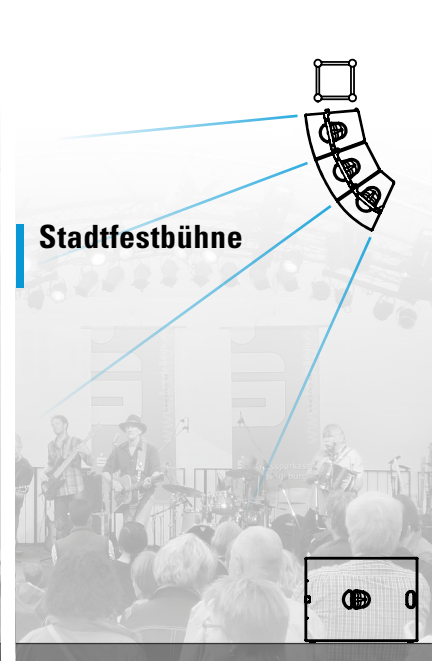
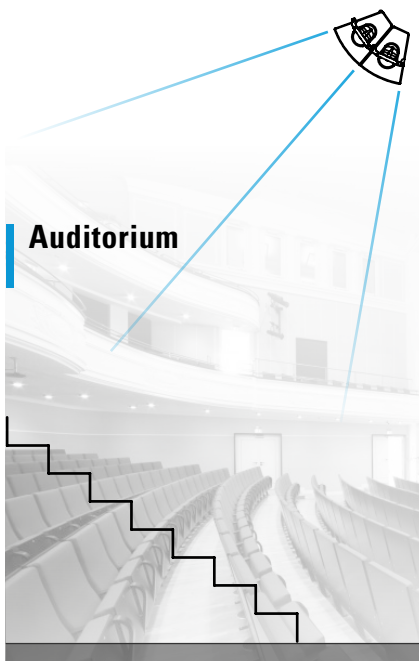




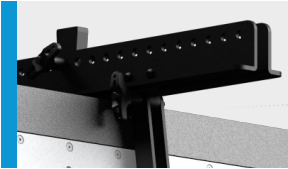
# Constant Curvature

**C 15 (15°) - C 30 (30°)**

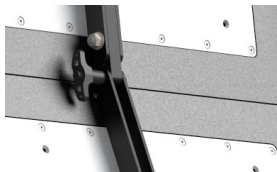
- Volle Skalierbarkeit
- Hochpräzise Schallabstrahlung
- Kompaktes Erscheinungsbild
- Hohe Leistung



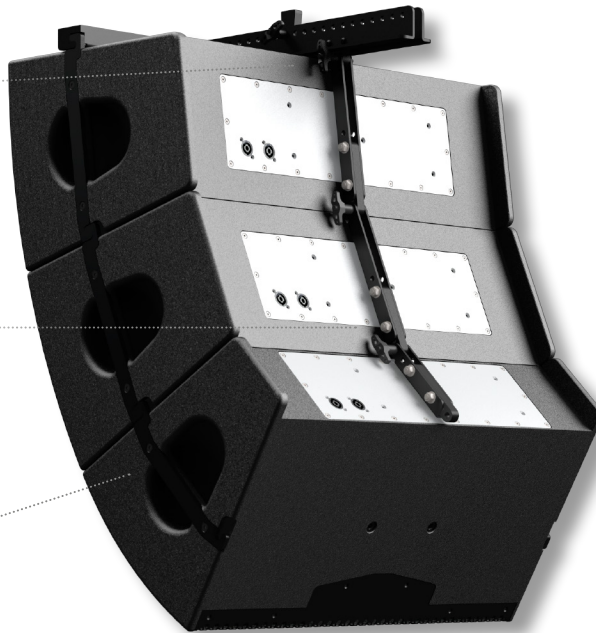
## FLYING SYSTEM



Flying Cradle



Integrierte Flugmechanik



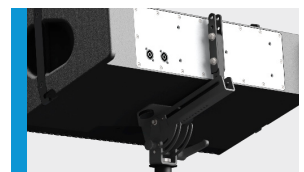
## APPLICATIONS



**C 30 / Galeo C Sub**  
MultiRigg™



**C 15 + C 30 / C Sub 1801**  
Flying Cradle



MultiRigg™ Hardware



**MultiRigg™**

swiveling fastening solution for horizontal and vertical alignment, for flown / ground stacked / mounted applications, incl. accessories (2 x knurled screws M10 x 20 mm, 1 x handle screw M8 x 55 mm), max. load 50 kg  
Order No. **01360**



**MultiRigg™ light**

version for fixed installations, for horizontal and vertical alignment, tiltable vertical angle, incl. accessories (2 x M10 x 20 socket head screws), max. load 50 kg  
Order No. **01362**



**MultiTilt™**

Tilt adapter with adjustable tilt from 0° to 37,5° (2,5° steps), integr. pole mount adapter with clamping device, 2 x knurled screws (M10 x 20 mm), max. load 50 kg  
Order No. **01370**



**Flying Cradle**

for C 15 / C 30, max. load 140 kg  
Order No. **01357**



**Ring Screw**

M10- DIN 580  
Order No. **73700** (zincd)  
Order No. **73700/sw** (black zincd)



**TV Spigot**

10 mm internal thread, 28 mm Ø  
Order No. **08128**



**Speaker Pole**

250 mm, ø 35 mm, M20, with ring lock  
Order No. **03020**



**Pole Mount Adapter**

35 mm ø → M10 x 16 mm, M8 x 20 star knob screw  
Order No. **08126**  
Order No. **08126/w** (RAL 9010)



**Pole Mount Adapter**

35 mm ø → M10 x 16 mm  
Order No. **08126/II**  
Order No. **08126/II/w** (RAL 9010)



**Knurled Screw**

M10 x 20 mm  
Order No. **73750/w** (RAL 9010)  
Order No. **73750**



**Knurled Head Nut**

reduction screw for fastening M10 Pole Mount Adapter (08126)  
Order No. **73755**



**Quick Trigger Clamp**

max. load 100 kg  
Order No. **01223/100 kg**



**Steel Safety**

8 mm x 600 mm, black, max. load 40 kg (BGI 810-3), quick connector undetachably  
Order No. **01376/8**

## ACCESSORIES C 15 / C 30

### Wall Mount



bar: 269 mm, max. load 40 kg,  
incl. (M10 x 70 mm socket head screw,  
M10 hex lock nut and flat washer)

Order No. **08130/F/269/w** (RAL 9010)

Order No. **08130/F/269**

### Wall Mount



bar: 400 mm, max. load 40 kg,  
incl. (M10 x 70 mm socket head screw,  
M10 hex lock nut and flat washer)

Order No. **08130/F400/w** (RAL 9010)

Order No. **08130/F400**

### Flight Case



for 2 pcs. C 15 / C 30,  
heavy duty, PVC coated black, inserts  
for accessories, interior lined with felt.

Order No. **16600**