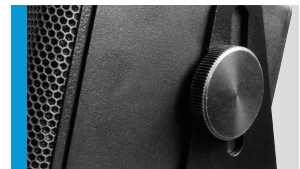




Miniatur-Lautsprechersystem für alle Anwendungen, bei denen eine besonders unauffällige Erscheinung, gute Klangeigenschaften und Leistungsdaten gefordert werden. Der sehr kräftige 4" Breitbandlautsprecher strahlt präzise ab und kann unverzerrte Pegel von über 113 dB erreichen. Umfangreiche Fliegepunkte, vielfältige Anschlussmöglichkeiten und der serienmäßige Bügel machen das i4 System zu einem universellen Beschallungswerkzeug für viele Nahfeldanwendungen.

## PRODUCT SPECIFICATIONS

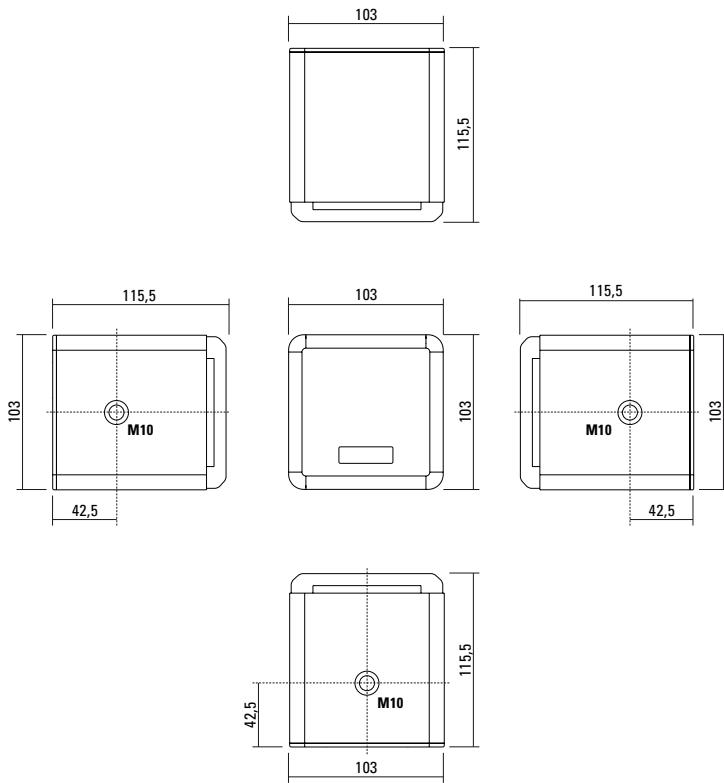
<b>Speaker Components</b>	4" wideband
<b>Description</b>	Multi Media Sound System
<b>Power</b> AES / Peak	100 W / 300 W
<b>Impedance</b> nominal	16 Ω
<b>SPL</b> 1 W / Peak @ 1 m	91 dB / 113 dB
<b>Usable Range</b>	150 Hz - 16 kHz (-6 dB)
<b>Coverage</b> horizontal / vertical	80° - conical
<b>Connectors</b>	2 x Speakon NL4MP in/out Coding: 1 +/- HiMid, 2 +/- loop thru 1 x Phoenix 4-pol
<b>Rigging / Fittings</b>	3 x M10 / 1 x M6
<b>Weight</b>	1,6 kg
<b>Size</b> height x width x depth	10,3 x 10,3 x 11,6 cm
<b>Order No.</b>	<b>00150/black</b> <b>00150/white</b> (RAL 9010)



Ultra kompakt.



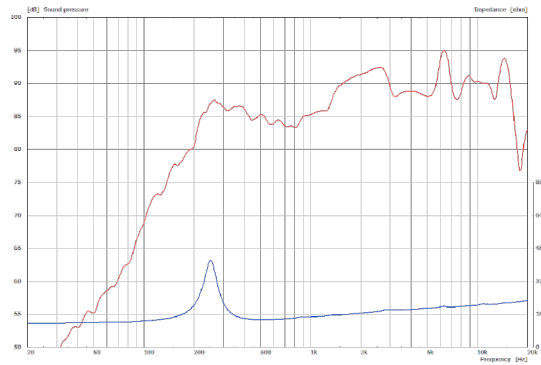
## DIMENSIONS



### Controller Setups:

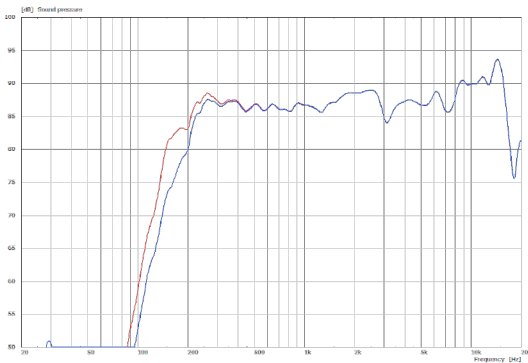
<http://www.seeburg.net/de/downloads>

### Sensitivity 1 W @ 1 m + Impedance

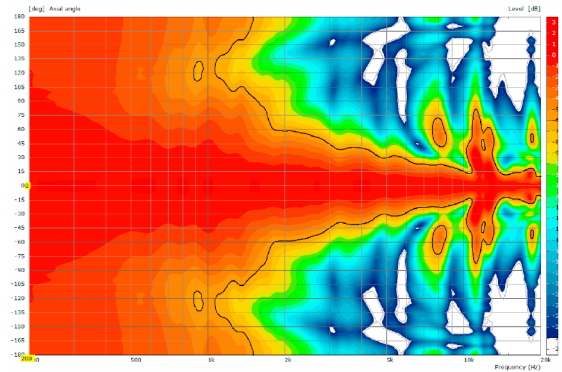


## MEASUREMENTS

### Frequency Response with Presets



### 2D Directivity Plot - radial



## ACCESSORIES i4

### Flying Bracket



for i4,  
incl. socket screws,  
2 x M10 x 20 mm

Order No. **01203**  
Order No. **01203/w** (white)

### Knurled Screw



M10 x 20 mm  
Order No. **73750**  
Order No. **73750/w** (RAL 9010)

### Phoenix Connector



2 pol Order No. **08257**  
4 pol Order No. **08256**

### Doughty Twenty Clamp



M10, max. load 20 kg  
Order No. **01223/20 kg**

### Truss Clamp



incl. M10 Adapter,  
max. load 15 kg  
Order No. **01221**

### Flange



with ball and socket joint,  
with additional locking screw,  
M10 x 15, max. load 15 kg  
Order No. **08125**

### Steel Safety



4 mm x 600 mm, black,  
max. load 10 kg (BGI 810-3),  
quick connector undetachably  
Order No. **01376/4**

### Base Plate, Round



M20, K&M,  
ø 450 mm, height: 21 mm  
black zinc die-cast, felt strips on  
the bottom, weight: 6,7 kg  
Order No. **01278/round**

### Speaker Pole, Light



adjustable, K&M,  
incl. M20 Adapter  
Order No. **03004/set**

### Flight Case



for 4 pcs. i4, with mounted flying  
brackets 01203, standard, 7,0 mm  
birch multiplex, PVC coated, partition  
walls, hinged lid, 1 x recessed sprung  
handle, 1 x butterfly catches, rubber  
feet, interior lined with felt.  
Order No. **16450**

### Flight Case



for 8 pcs. i4, with mounted flying  
brackets 01203, standard, 7,0 mm  
birch multiplex, PVC coated, partition  
walls, hinged lid, 2 x recessed sprung  
handles, 2 x butterfly catches,  
rubber feet, interior lined with felt.  
Order No. **16452**

