



Multifunktionales und kompaktes 2-Wege System der Oberklasse. Der koaxiale Aufbau sorgt in Kombination mit einem aufwendig entwickelten und großflächigen Horn für ein absolut gleichmäßiges Übertragungsverhalten auch außerhalb der Hauptabstrahlachse. Hochleistungs-Neodymantriebe und Langhubschwingspulen sorgen für einen hohen Wirkungsgrad bei gleichzeitig stark reduzierten Verzerrungen. Für die Installation und den universellen Einsatz stehen neun M10 Gewindeeinätze zur Aufnahme des MultiRigg™ und weiteren Zubehörs zur Verfügung.

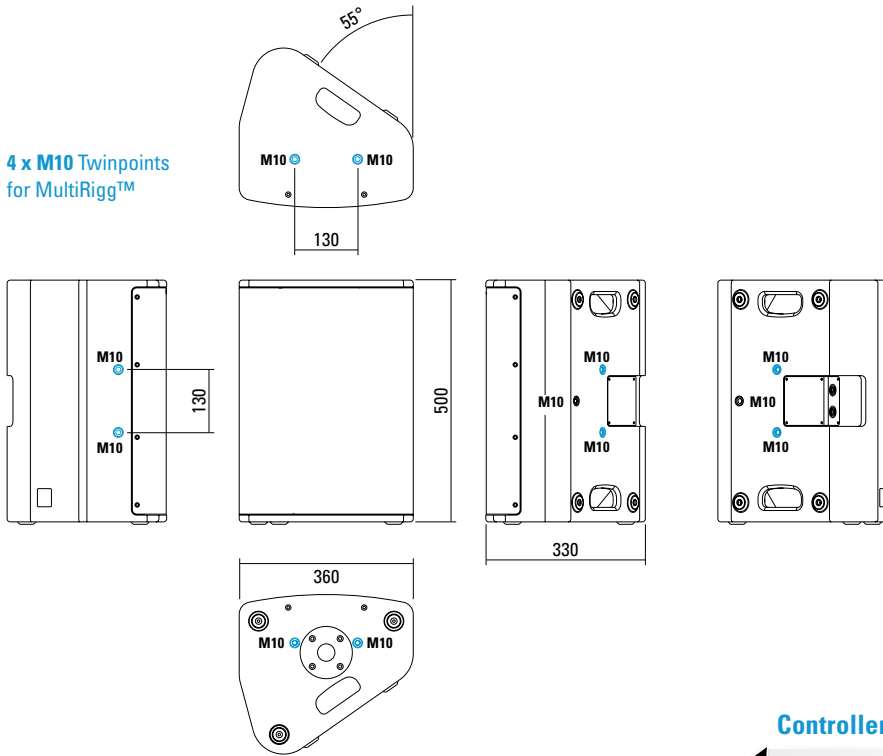
PRODUCT SPECIFICATIONS

Speaker Components	12" Nd (3,5" VC) / 1,4" Nd (3" VC)
Description	Multifunctional Coaxial Sound System
Power AES / Peak	500 W / 1500 W
Impedance nominal	8 Ω
SPL 1 W / Peak @ 1 m	99 dB / 131 dB
Usable Range	55 Hz - 18 kHz (-6 dB)
Tuning Frequency Excursion minimum	65 Hz
X - Overpoint acoustical	1 kHz
Coverage horizontal / vertical	80° x 60° - rotatable
Connectors	2 x Speakon NL4MP in/out Coding: 1 +/- HiMid, 2 +/- loop thru
Handles	2 x
Rigging / Fittings	9 x M10 To be used with MultiRigg™ 35 mm pole mount
Weight	18,5 kg
Size height x width x depth	50,0 x 36,0 x 33,0 cm
Order No.	01095



DIMENSIONS

4 x M10 Twinpoints
for MultiRig™

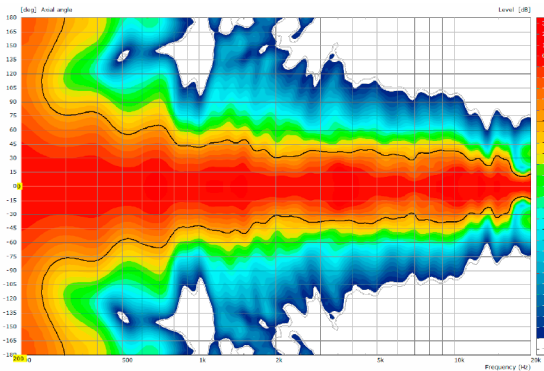


Controller Setups:

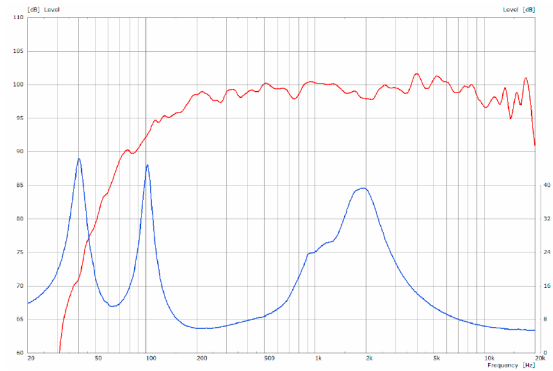
<https://www.seeburg.net/de/downloads>

MEASUREMENTS

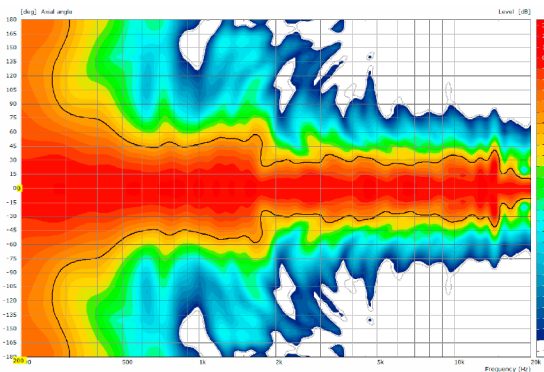
2D Directivity Plot - horizontal



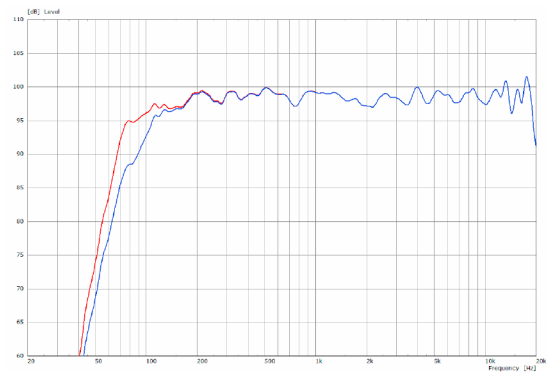
Sensitivity 1 W @ 1 m + Impedance



2D Directivity Plot - vertical



Frequency Response with Presets



MultiRigg™



swiveling fastening solution for horizontal and vertical alignment, for flown / ground stacked / mounted applications, incl. accessories (2 x knurled screws M10 x 20 mm, 1 x handle screw M8 x 55 mm), max. load 50 kg
Order No. **01360**

MultiRigg™ light



version for fixed installations, for horizontal and vertical alignment, tiltable vertical angle, incl. accessories (2 x M10 x 20 socket head screws), max. load 50 kg
Order No. **01362**

MultiTilt™



Tilt adapter with adjustable tilt from 0° to 37,5° (2,5° steps), integr. pole mount adapter with clamping device, 2 x knurled screws (M10 x 20 mm), max. load 50 kg
Order No. **01370**

Knurled Screw



M10 x 20 mm
Order No. **73750/w** (RAL 9010)
Order No. **73750**

Knurled Head Nut



reduction screw for fastening M10 Pole Mount Adapter (08126)
Order No. **73755**

Pole Mount Adapter



35 mm \varnothing → M10 x 16 mm, M8 x 20 star knob screw
Order No. **08126**
35 mm \varnothing → M10 x 16 mm
Order No. **08126/II**

Steel Safety



6 mm x 600 mm, black, max. load 22 kg (BGI 810-3), quick connector undetachably
Order No. **01376/6**

TV Spigot



10 mm internal thread, 28 mm \varnothing
Order No. **08128**

Ring Screw



M10– DIN 580
Order No. **73700** (zincd)
Order No. **73700/sw** (black zincd)

Quick Trigger Clamp



max. load 100 kg
Order No. **01223/100 kg**

Quick Trigger Clamp - small



M10, max. load 20 kg
Order No. **01223/20 kg**



MultiRigg™ Light



MultiRigg™

ACCESSORIES X 6

Adapter



for X 4, X 6, X 8
for mounting with Wall Mount (03034),
incl. 2 x M10 x 20 socket head screws

Order No. **01198/w** (RAL 9010)
Order No. **01198**

Wall Mount



2 x M6 fixing holes (d=73 mm),
1 x M10 fixing hole (center),
max. load 25 kg

Order No. **03034/w** (RAL 9010)
Order No. **03034**

Wall Mount



bar: 269 mm, max. load 40 kg,
incl. (M10 x 70 mm socket head screw,
M10 hex lock nut and flat washer)

Order No. **08130/F/269/w** (RAL 9010)
Order No. **08130/F/269**

Wall Mount



with tilt unit, max. load 40 kg
Order No. **08130**

Cover



for X 6,
padded
Order No. **01225/X6**

Rain Cover

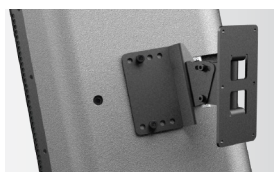


for X 6,
with zipper
Order No. **01225/X6/outdoor**

Flight Case



for 2 pcs. X 6 and 2 pcs. MultiRigg,
partition walls, heavy duty, 9 mm
birch multiplex, PVC coated black,
6 x recessed sprung handles,
2 x butterfly catches, 4 x 100 mm blue
wheels (2 pcs. with brake), interior
lined with felt
Size (H x W x D): 68,6 x 61,5 x 65,5 cm
Order No. **16565**



Rain Cover